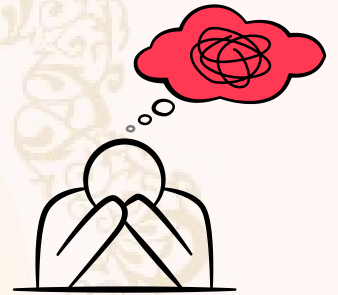
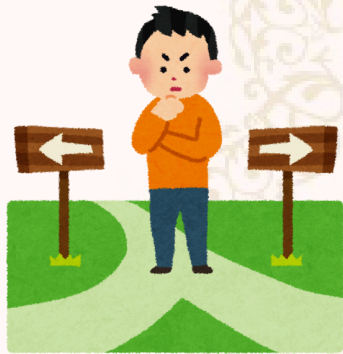


Day 6: Understanding Delusion (Misidentification with the Material and Temporary)



A Guide by
Shree's Essencia

Visit us @ www.shreesessencia.com 

AWAKEN YOUR SPIRITUAL ESSENCE

 Shop Our Products to Support Your Journey:

<https://streshreesessenciacom.creator-spring.com/>

[https://www.redbubble.com/people/Shrees-Essencia/
shop?asc=u](https://www.redbubble.com/people/Shrees-Essencia/shop?asc=u)

Don't Forget to Like, Share, and Subscribe

https://www.youtube.com/@Shrees_Essencia/community

Day 6: Understanding Delusion (Misidentification with the Material and Temporary)

Purpose: To understand how delusion arises from identifying with the temporary and material aspects of life, and begin the purification process by recognizing your true, eternal nature.



AWAKEN YOUR SPIRITUAL ESSENCE

1. Understand the Concept of Delusion (Misidentification with the Material)

- **Action:** Delusion occurs when we mistake the temporary, material world for our true, eternal self. We often identify with our possessions, status, or body, forgetting that these are transient and not the essence of who we are.
- **Simple Explanation:** Delusion = When we mistakenly believe that the material and temporary things in life—like money, appearance, or possessions—define us.
- **Example:** "I used to think that my success and the car I drove defined my worth. When I lost my job, I felt lost because I had identified too much with these external factors."

AWAKEN YOUR SPIRITUAL ESSENCE

2. Identify Areas Where You May Be Attached to the Temporary

Action: Reflect on areas of your life where you might be identifying too strongly with the material or temporary.

- **Ask yourself:**

- What do I consider most important in my life?
- Do I identify too much with my appearance, job, possessions, or other external factors?

- **Write down 3 areas of your life where you might be attaching too much importance to the temporary or external.**

- **Example:**

1. I often identify myself by my career achievements, and when I don't get recognized, I feel insignificant.
2. I care a lot about how I look and feel anxious when I don't look my best.
3. I've focused too much on my bank balance to feel secure, forgetting that true security comes from within.

3. Recognize How These Attachments Cause Discomfort

Action: Reflect on how your attachment to the material or temporary causes you stress, anxiety, or discomfort.

- **Ask yourself:**
 - How does my attachment to these things affect my peace of mind?
 - Do I feel anxious or upset when these things are threatened or taken away?
- **Note:** When we identify too strongly with the material, we create a false sense of security. This leads to discomfort and delusion when circumstances change.
- **Example:** "When my job was threatened, I felt like I was losing my identity. My mind raced with thoughts of insecurity because I had connected my worth with my career."

4. Observe Your Attachments and Reactions to the Temporary

Action: For the next 12 hours, observe moments when you attach your identity to temporary aspects of life.

- Notice when you feel stressed, insecure, or overly focused on things that are fleeting (appearance, status, possessions).
- **Pause and ask:**
 - Am I identifying with something temporary right now?
 - How does this attachment affect my inner peace?
- **Write down moments when you feel attached to something material or temporary and reflect on their impact.**
- **Example:** "Today, I felt anxious about an event I was attending because I was worried about how I would look. I realized I was identifying too much with my appearance instead of who I truly am."

5. Set an Intention to Detach from the Temporary for the Day

Action: Choose one area of attachment from your list and set the intention to detach from it for the day.

- Instead of identifying with the temporary, remind yourself that your true self is eternal and beyond the material.
- **Example:**
 - If you're attached to how you look, decide to focus on your inner qualities rather than external appearance today.
 - If your identity is too tied to your career, spend today focusing on your spiritual growth or connecting with loved ones instead of work.

AWAKEN YOUR SPIRITUAL ESSENCE

6. Evening Reflection (Journaling)

Action: Before ending your day, reflect on your experience of detaching from the temporary. Here are some examples to guide you:

- **How did it feel when you realized you were identifying with something temporary?**
- **Example:** "When I realized I was stressed about my appearance, I felt a sense of relief, as I reminded myself that my true self isn't dependent on looks."
- **What reactions or emotions arose when you detached from these external factors?**
- **Example:** "At first, it felt strange to detach from my work identity, but by the end of the day, I felt more peaceful and connected to my deeper self."

AWAKEN YOUR SPIRITUAL ESSENCE

- **Were you able to recognize your true nature beyond the material?**
- **Example:** "I noticed that when I focused on my spiritual self, I felt more complete and centered, instead of constantly searching for validation outside myself."
- **How did it feel to release the pressure of maintaining your identity based on the temporary?**
- **Example:** "I felt freer. Letting go of the need to look perfect or perform perfectly in my career brought a sense of inner peace."
- **What is your takeaway about the nature of delusion and attachment?**
- **Example:** "I learned that by identifying with temporary things, I create a false sense of security. True peace comes from understanding that my essence is beyond the material world."

Guided by Bhagavad Gita Wisdom:

Delusion arises when we identify with the temporary material world, forgetting our true nature as eternal souls. In the Bhagavad Gita (2.16), Krishna explains that the material world is temporary and impermanent, while the true self (Atman) is eternal and unchanging. Delusion causes us to mistake the transient for the permanent, leading to suffering and confusion.

Relevance:

Recognizing the impermanence of the material world helps us detach from worldly illusions and connect with our higher spiritual truth, bringing peace and clarity to our lives.

AWAKEN YOUR SPIRITUAL ESSENCE

End of Day 6

Summary:

- Today, you recognized how delusion arises from misidentifying with the material and temporary aspects of life.
- You practiced detaching from these temporary attachments and reconnecting with your true, eternal nature. This step helps purify the mind by shifting focus from external validation to inner peace.



AWAKEN YOUR SPIRITUAL ESSENCE
Thank you!

Visit us @ www.shreesessencia.com 

Don't Forget to Like, Share, and Subscribe
https://www.youtube.com/@Shrees_Essencia/community